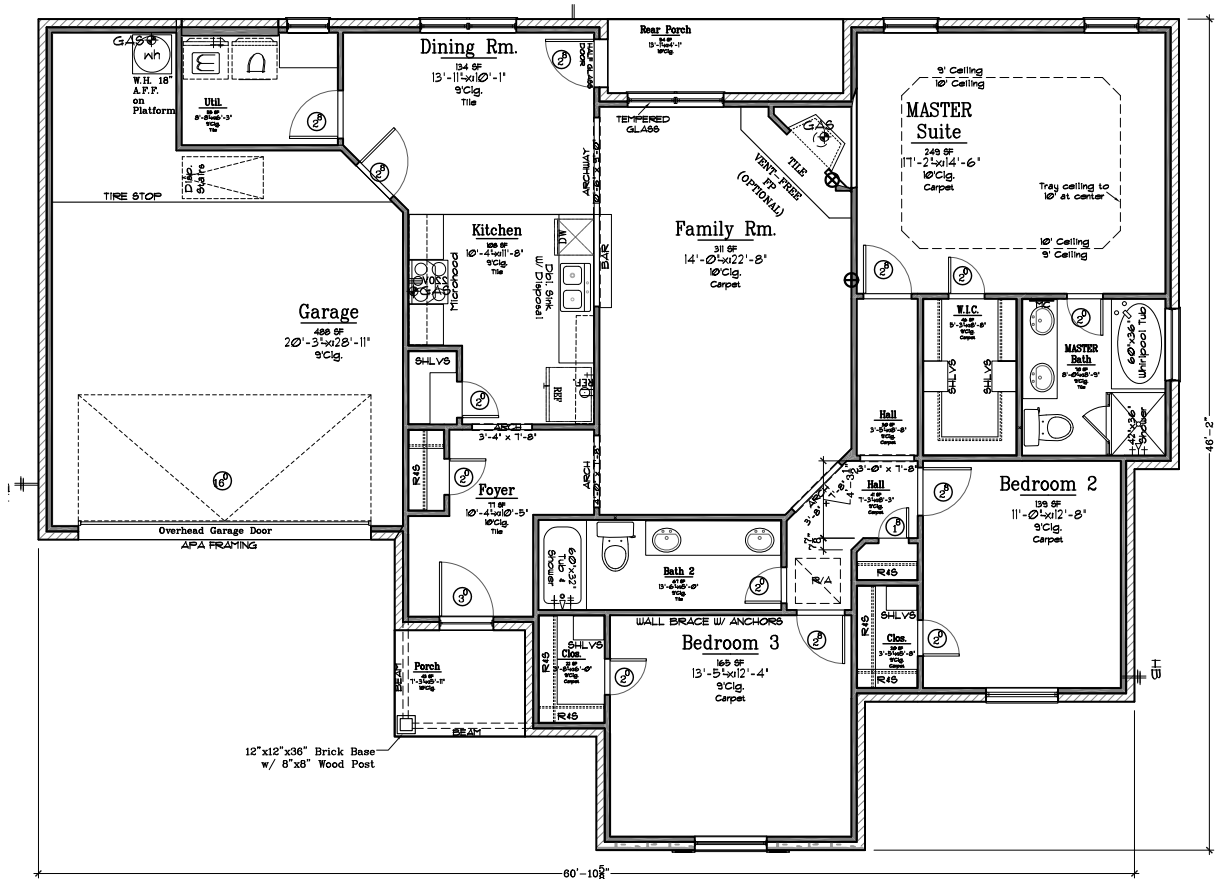


THE PALAMINO
3807 BRIDLE COURT
LOT 11
BLOCK 2
PHASE 2



COPYRIGHT 2008 OAKWOOD CUSTOM HOMES GROUP LTD.

3 BEDROOM
2 BATH
2 CAR GARAGE WITH EXTRA STORAGE



FIRST FLOOR

AREAS	
TOTAL LIVING	1753 SF
FRONT PORCH	42 SF
REAR PORCH	54 SF
GARAGE	488 SF
<hr/>	
TOTAL SLAB	2331 SF

SCALE: 3/32" = 1'-0"

ACTUAL PLAN MAY VARY FROM THIS CONCEPTUAL BROCHURE

© COPYRIGHT 2008 OAKWOOD CUSTOM HOMES GROUP LTD. ~ HOME PLAN DESIGN SERVICE